



WINDSOR ELMHAVEN

Care Center

STOCKTON, CA



*Post-Acute Care
in an Optimal
Residential Environment*



Welcome to Windsor Elmhaven

CARE CENTER

Providing superior people delivering highly sophisticated skilled nursing and rehabilitation care in the best possible environment.

THE WINDSOR PHILOSOPHY

We understand the compelling importance of post-acute care - and the power of *excellent* care to make a profoundly positive impact in the quality of life of each resident.

DESIGNED FOR SUPERIOR CARE

- *Providing comprehensive therapy and state-of-the-art treatments – all within a secure, comfortable environment.*
- *We carefully design a personalized health care program to help each person achieve the highest possible level of independent functioning.*
- *Our staff is specially prepared to serve the unique concerns of our residents.*
- *Windsor has a documented record of delivering outcomes far exceeding expectations.*

OUR APPROACH TO CARE

- *Through training and experience, we have learned the sensitive blend of caring for the personal and emotional needs of each individual while maintaining a constant attitude of dignity and respect.*
- *We emphasize freedom of choice, recognizing the individuality of each resident.*

VISITORS ARE ALWAYS WELCOME

Family and friends are always welcome to visit. Throughout the year we invite guests to participate in ongoing activities and special holiday celebrations.

- *We also encourage resident rooms to be enhanced with favorite belongings from home. We strive to provide a personal touch.*



A SENSE OF COMMUNITY

Windsor Elmhaven is much more than a fine 24-hour skilled nursing facility. We're an interactive community where people, both young and old, share their lives.

Residents, family, staff, and volunteers working together give Windsor Elmhaven a very special spirit!

Services

FINEST 24-HOUR SKILLED NURSING CARE

COMPREHENSIVE REHABILITATION SERVICES

- Physical Therapy
- Occupational Therapy
- Wound Care
- Complex Post Surgical Needs
- Speech Therapy
- IV Therapy
- Tube Feeding
- Pet Therapy
- Respite and Short Term Care
- Hospice Care

"PERSONAL TOUCH" SERVICES

- Large TV in Common Area
- Community Outings
- Volunteer Programs
- Spacious Patio Areas
- Beauty & Barber Shop
- Business & Banking Service
- In-House Movies
- Holiday Parties
- Barbecues
- Religious Services
- Resident Council
- Daily Activities

RESTAURANT-STYLE DINING

- Selective Menus – Dietician Supervised
- Special Therapeutic Diets
- Assisted Dining Available

SOCIAL SERVICES FOR RESIDENT AND FAMILY

- Individual & Family Counseling
- Community Agency Referral Service
- Discharge Planning

CONSULTANT SERVICES AVAILABLE

- Dental
- Audiology
- Ophthalmology
- Podiatry
- Psychotherapy
- Pharmacy

Windsor Elmhaven Care Center of Stockton employs and provides benefits and services to all persons in a manner which does not discriminate on the basis of individual's sex, race, color, religion, national origin, ancestry, pregnancy, age, marital status, sexual orientation, veteran status, medical condition, or disability.

The Challenge

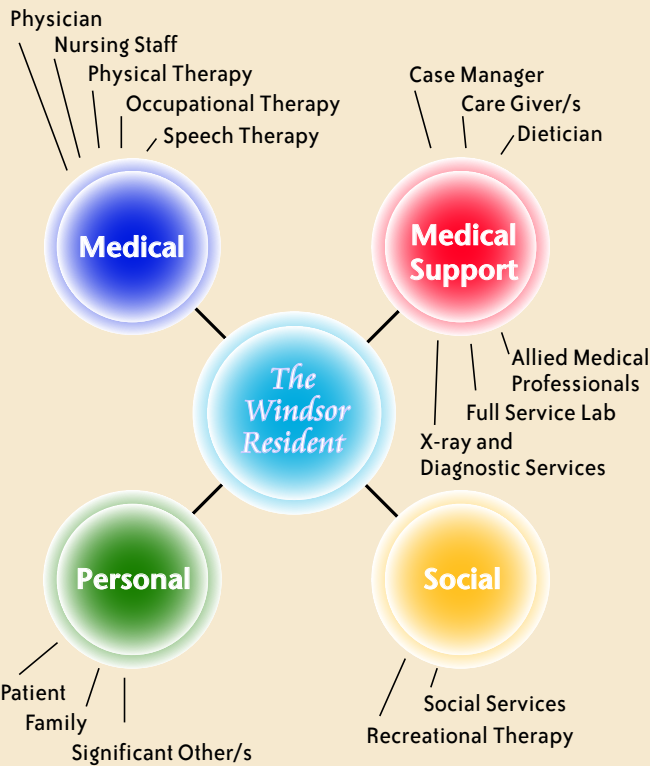
*How do you provide
sophisticated,
highly technical
healthcare services
while maintaining a warm
and caring environment?*

ANSWER:

It takes a team!



Please call (209) 477-4817 for admissions information.



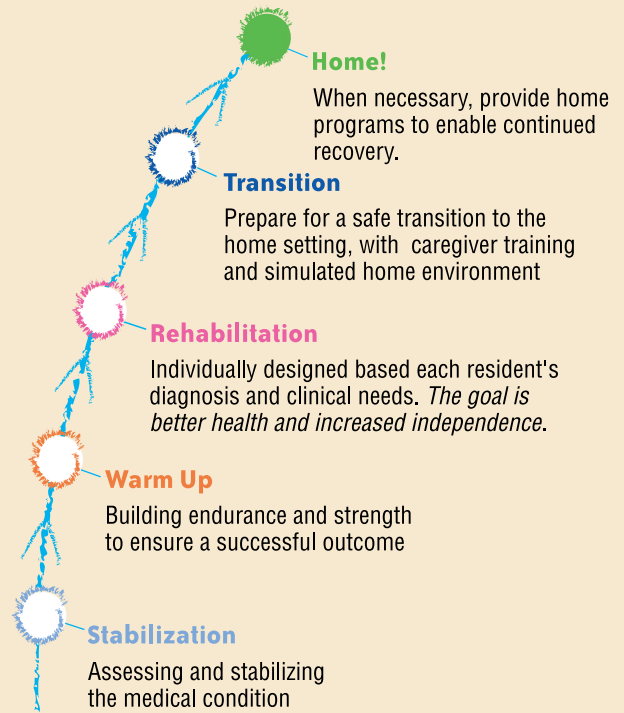
INTERDISCIPLINARY TEAM APPROACH

Windsor's exclusive, innovative approach to total patient care.

At *Windsor Elmhaven*, we understand that the resident experience is a multi-faceted process, requiring coordinated attention from the many professionals, support team, and concerned individuals all working to foster improvement.

We developed our unique *Interdisciplinary Team Approach* to optimize communications and coordination, ensuring the best possible results.

Our multi-tiered approach ensures that each resident is fully prepared to reach the next step in his or her program.



CUSTOMIZED PATH OF REHABILITATION

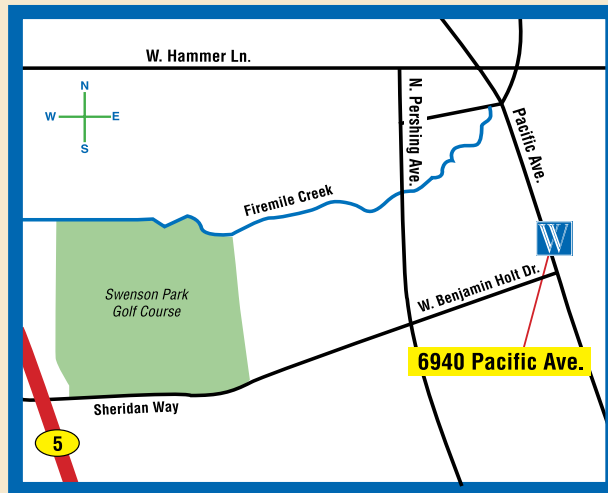
A PLACE TO ENJOY LIFE

Regardless of physical condition, residents are offered a wide range of opportunities to make life as enjoyable as possible. Religious services, outings, and special events are a regular part of our recreational programs, which we carefully plan for fun and therapy.

At Windsor Elmhaven, we believe that the more people enjoy life, the better they feel!

VISITING US IS EASY!

Windsor Elmhaven is conveniently located close to much of the Stockton medical community, easily accessible to freeways.



For more information, or to schedule a visit, call:

(209) 477-4817

**6940 Pacific Avenue
Stockton, CA 95207**

**www.WindsorCares.com
email: info@windsorcares.com**



WINDSOR ELMHAVEN

Care Center

STOCKTON, CA

Windsor Elmhaven is licensed by the California Department of Health Services and is certified for Medicare and Medi-Cal. We are credentialed by many HMO's, PPO's, Medical Groups, and private insurance companies to render skilled nursing services to their subscribers.

© 2008

Windsor Elmhaven Care Center of Stockton is managed by SnF Management, Inc. (Los Angeles).